



2020 PRESIDENTS' REPORT

Despite the uncertain and challenging times of 2020 ZimSEF has continued its operations and managed to achieve a great deal, all things considered.

We have continued to work with YASD through the sponsorship programme, with 10 students, although interrupted, completing the school year.

We have also supported the community of Hatcliffe with the completion of the Hatcliffe 3 Water Access Project and an initiative to distribute Mealie Meal to YASD and ZimSEF beneficiaries in Hatcliffe extension

Due to the limitations imposed by the COVID-19 pandemic, the Committee decided not to go ahead with any fundraising events this year. We have, however, continued to receive some funding this year through sponsorships, individual donations and The Classic Safari Company Sponsorship.

It has been a difficult year for everyone, and life in Zimbabwe has not been easy. The impact of COVID-19 on health and wellbeing, continued low rainfall and severe economic hardships have greatly impacted on the children and their families. The school year was continually disrupted by lockdowns and teachers strikes due to underpayment and objections to working conditions during the pandemic.

It is with sincere gratitude we thank YASD for continuing their commitment to ZimSEF under these circumstances.

We also thank all our committee members and donors who have continued their support. In particular, Julie Hanley, our Treasurer for the past few years, who sadly has resigned from the Committee. We thank Julie for her wonderful support and generosity of time and spirit!

COMMUNITY PROJECTS

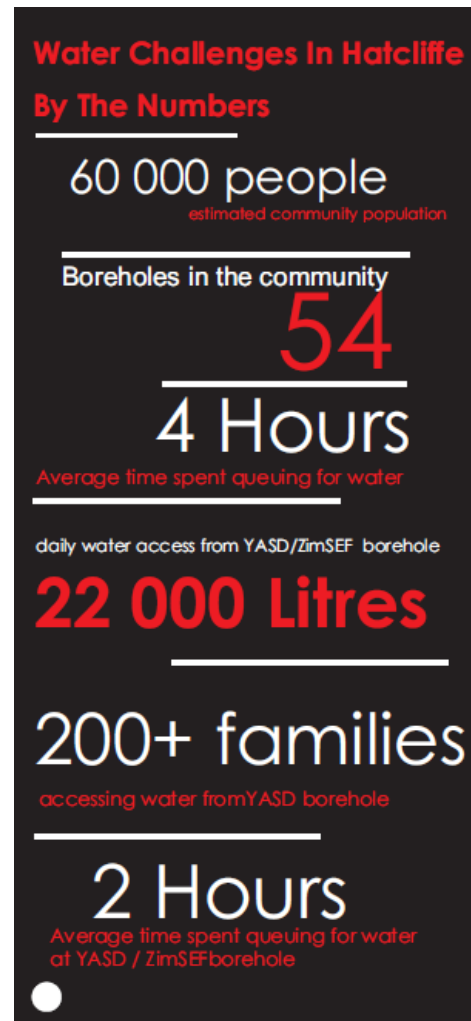
Hatcliffe 3 Water Project

The Hatcliffe 3 Water Access Project was completed in March 2020 – the solar powered water pump providing access to potable water to over 1500 people, including the students of Hatcliffe 3 Primary School and its nearby community.

Implemented by our community partners YASD, the borehole has provided critical access to potable water to the Hatcliffe community. We did not anticipate that access to water for sanitation would become such a priority this year, but delivery of this project was well timed!

The water pump has also reduced waiting times for access to water and has spawned a market gardening project which has helped a group of young women generate an income from the sales of the produce.

We have received very positive feedback regarding this project. Petros, the Project Co-ordinator at YASD, reporting that ‘the borehole has been functioning well and with the onset of summer the solar panels are able to pump more water quickly to fill the tank and increase the community to access it.’



ZimSEF beneficiary, Malcolm, carrying Mealie Meal for distribution.

Mealie Meal Food Distribution

Many families have suffered from severe food shortages as a result of Covid-19 lockdowns, so the distribution of the Mealie meal to the Hatcliffe families has been of great assistance.

We thank YASD for this initiative and were pleased to help fund this project.

THE EDUCATION FUND

The disruption to the school year was very concerning. Students completed Term 1, schools closed for Term 2 and most schools re opened for Term 3 in September / October. We provided funds to allow students to complete the school year.

A total of 10 beneficiaries began the 2019 year. This included 3 primary, 4 secondary borders and 3 secondary day students.

Sponsors continued their support to these students despite the disruptions. 10 students completed the year.

Lockdowns during Covid-19 have demonstrated the need for alternative methods of delivering education, it has also given rise to new possibilities. The increasing acceptance of informal or self-directed learning has given ZimSEF and YASD an opportunity to explore different avenues for achieving our organisational goals. The cost of education, including uniforms, is a major barrier to access to education in the Hatcliffe community, and Zimbabwe more broadly. Those who YASD and ZimSEF engage with are living on or below the poverty line, and many children are kept out of school to work or because they cannot afford a uniform, school fees, or both. With this in mind, we are working to develop a model to provide education beyond the classroom and to implement a suitable programme to meet the needs of children and young people of the Hatcliffe community going forward. This is an exciting initiative.



THE CLASSIC SAFARI COMPANY

Est 1992

FUNDRAISING

ZimSEF was proud to be The Classic Safari Company's 2020 chosen charity. The Classic Safari Company is Australia's leading safari specialist, creating tailor-made bespoke holidays to some of the world's finest wildlife and wilderness regions. Committed to working with the foremost ecotourism operators in Africa, The Classic Safari Company donated to ZimSEF for each and every passenger travelling to Africa. And, although it has not been a year for travel, the support from The Classic Safari has been greatly appreciated and has been critical for our plans for 2021!

Although no annual fundraising event was held in 2020, we were also fortunate to have received funds from our sponsors, as well as the generous ongoing support from Joanna Bainbridge.

The sponsorship programme is continuing, and we will look to other avenues for fundraising for our future projects.



Children carrying water collected from the YASD/ZimSEF Borehole

THE FUTURE

ZimSEF will continue to support the vital work our partners, YASD, manage to achieve for the Hatcliffe community.

Our focus is increasingly on developing projects and programmes to fulfil our goals as best as possible.

The Education Fund will rely on individual sponsorships to continue, and no additional beneficiaries will be taken on unless they are sponsored.

The development of an Independent Learning Centre, which will provide access to online education and utilise self-directed learning tools, will be our major focus for 2021. The Centre will also provide a space where school-aged children and young adults could access school content, read books, do school homework, exercises and tests or access recorded lessons.

Tempe McMinn

President

Amber Maiden

Vice-President